

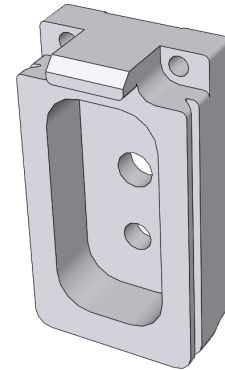
## About the AP-900

The **AP-900** Sidekick Shifter Block moves the base of the Sidekick away from the ball head just enough to reposition the center of gravity of the lens, moving it closer to the center of the ball head, thus allowing the lens to balance optimally.

The AP-900 Shifter Block attaches easily to the bottom mounting base of the Sidekick using pre-drilled mounting holes. **Note:** Older Sidekicks may not have these drilled holes, or may have two differently sized holes. This Shifter Block can be mounted securely without using both of the center fasteners; however if no mounting holes are present, or if your lens does not balance with this Shifter, please contact us for assistance.

# Wimberley

## AP-900 Sidekick Shifter Block



Weight: 2.8 oz

Dimensions (L x W x H): 2.7" x 1.5" x 0.7"

Materials: Anodized 6061 Aluminum, stainless steel

### Package Contents:

- **AP-900:** Sidekick Shifter Block (0.75") (Qty 1)
- **Mounting Screws:** 8/32 x 3/4" (Qty 2)
- **Mounting Screws:** 1/4-20 x 5/8" (Qty 2)
- **Hex Key:** 5/32" (Qty 1)
- **Hex Key:** 9/64" (Qty 1)

Made in USA

### Sidekick Shifter Combo offsets:

**AP-900** Sidekick Shifter Block = 0.75" offset

**AP-901** Combo: Sidekick Shifter + one (1/4") spacer plate = 1.0" offset

**AP-902** Combo: Sidekick Shifter + two spacer plates = 1.25" offset

**AP-903** Combo: Sidekick Shifter + three spacer plates = 1.50" offset

**Wimberley, Inc.**

1750 Broadway St  
Charlottesville, VA  
22902 USA

Phone: 1-434-529-8385

Toll Free: 1-888-665-2746 (USA & Canada)

[www.tripodhead.com](http://www.tripodhead.com) [info@tripodhead.com](mailto:info@tripodhead.com)

5 Year Warranty – See [www.tripodhead.com/warranty.cfm](http://www.tripodhead.com/warranty.cfm) for complete details

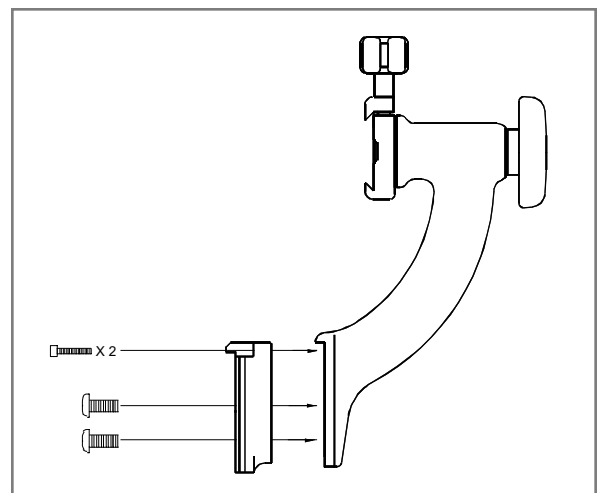
## Instructions

### Attaching the AP-900 Sidekick Shifter:

1. Attach the Shifter Block to the flat face on the lower portion of the Sidekick using the 4 fasteners and 2 hex keys included as shown below.

**IMPORTANT NOTE: The fasteners included in the Sidekick Shifter kits are specific to the number of spacers used in each kit.** If spacer plates are added to this Shifter Block, the fasteners in this kit will be too short to mount it to the Sidekick. In this case, contact us and we can provide the additional hardware needed to connect the Sidekick Shifter to your gimbal head adapter in order for your lens to reach optimal balance.

If you experience difficulty getting the screws started in the mounting holes, there may be a small amount of powder coating residue covering the beginning threads of the hole. A greater amount of force may be required to install the screws, however you want to be careful not to cross-thread. Contact us if you have concerns and we'll be happy to assist you.



**Thank you for your interest in Wimberley products.** If you have any questions or comments please feel free to contact us.